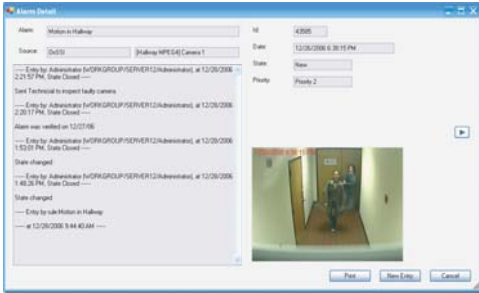


NetCentral

Central-Station Video Monitoring & Management System

Continued



Alarm Detail Window

Presents type, source and cause of each alarm, user comments, alert state and priority status.



Video Viewer

Variable speed, bi-directional playback and access to live video for further investigation

The NetCentral Advantage

- Advanced operational status monitoring for large-scale, multi-site surveillance deployments
- Supports multiple master and slave NetDVMS servers
- Event-driven alerts received from cameras, servers, physical security devices and video content analytics systems
- Instant access to cameras at all sites via map-driven interface or tree view of all system components, for drill-down to sites, servers and connected cameras and devices.
- Multiple concurrent operators with individual user rights and role-based groups (Active-Directory supported)
- Visual and audible alerts upon event-triggered alarms or operational status exceptions
- Customizable rules-based alerting, with clear indication of the location, time and nature of the event in plain language - no camera or error codes
- Detailed alarms list, including search filters for time, source, assigned operator and alarm state
- Client-server architecture using HTTP and XML-based data communication

- Connection to servers by DNS name or IP address
- Use of built-in NetDVMS accounts for server authentication
- Extensive alarm management capabilities - change alarm status and priority, assign alarm to specific operators, and enter user information and comments
- Multiple system health alerts including Archive Failure, Deleted Camera, Non-responsive Camera/Server, Disk Space Low
- Central logging of all event-triggered alarms and system information in SQL database
- Detailed audit trails for each event/alert.
- Change the status of single, multiple or all alerts
- Investigate event-triggered alerts using advanced video playback bus (bi-directional, variable speed) with optional live camera view
- Tight integration with third-party physical security and IT systems, such as access control, contact closure and point-of-sale.
- Push Live Video directly to client users' NetMatrix Blank Screen Monitor viewers
- Optional 1-year Software Upgrade Plan (SUP)

Ordering information

NetCentral-Base
System-wide software license

NetCentral-Server
NVR server license, required one per connected NVR server

SUP-NetCentral-Base
SUP-NetCentral-Server
Optional 1-Year Software Upgrade Plan (required for both Base and Server)

NetCentral Operator Clients are provided free for an unlimited number of operators.

Minimum hardware requirements

NetCentral Server:
XP Pro or Windows 2003 Server (.Net installed), 2.4 GHz Intel P4 (or equivalent), 512 MB RAM.

NetCentral Operator Client:
XP Pro (.Net installed), 2.4 GHz Intel P4 (or equivalent), 512 MB RAM, AGP or PCI-Express graphics card, 1280x1024 minimum resolution.

Related products from OnSSI

NetDVMS
Large-scale, multi-site NVR and Camera Management system

NetMatrix
Automated event-driven Push Live Video virtual matrix

NetSwitcher
IP-based Control Room Video Wall Virtual Matrix Solution



For more information, please contact:

On-Net Surveillance Systems, Inc. 222 Route 59, Suite 303, Suffern, NY 10901
PHONE 845-369-6400 FAX 845-369-8711 WEB www.onssi.com